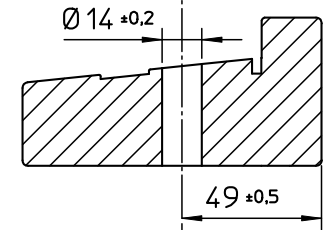
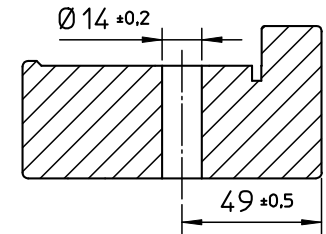
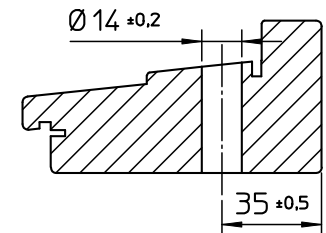
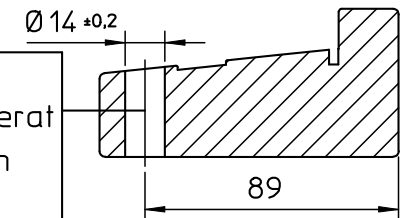


| Karmöverstycke ED/AD | |
|----------------------|--------|
| Modul | l mått |
| 13 | 744 |
| 14 | 794 |
| 15 | 844 |
| 16 | 894 |
| 17 | 944 |
| 18 | 994 |
| 19 | 1044 |
| 20 | 1094 |




Extra karmskruvshål på gångjärnssida är placerat enl. fig & 404 mm ner från karmöverstycke.



| Karmsida vänster ED/AD | | | |
|------------------------|--------|--------|--------|
| Modul | l mått | J mått | K mått |
| 18 | 220 | 610 | 1040 |
| 19 | 220 | 660 | 1140 |
| 20 | 220 | 710 | 1240 |
| 21 | 220 | 760 | 1340 |
| 22 | 220 | 810 | 1540 |
| 23 | 220 | 860 | 1640 |
| 24 | 220 | 910 | 1640 |

| Karmsida höger ED/AD | | | |
|----------------------|--------|--------|--------|
| Modul | l mått | J mått | K mått |
| 18 | 170 | 560 | 990 |
| 19 | 170 | 610 | 1090 |
| 20 | 170 | 660 | 1190 |
| 21 | 170 | 710 | 1290 |
| 22 | 170 | 760 | 1390 |
| 23 | 170 | 810 | 1490 |
| 24 | 170 | 860 | 1590 |

| | | | | |
|--|-----|-------------------|----------------|-----------------------------|
| B | - | Ritning reviderad | - | - |
| Rev. no. | No. | Description. | Change order. | By. |
| - | - | - | - | 1/1 |
| Checked by - date. | | Product. | Product group. | General tol. ±0,2 mm |
| - | | - | - | 1/1 |
| KARMSKRUVSBORRNING ED/AD | | | | |
|  Elitfönster www.elitfonster.se | | Drawn by. Anders | A3 Scale. 1:1 | Ver. - |
| | | Date. 2009-02-26 | Rev. 100926 B | Drawing No. 60-39-E3 |